

Updating you on the latest events at Elland Steel



Focusing On Performance



# Flying high at Exeter Airport

44 tonne, 68 metre long roof trusses get off the ground

**MAY 2004** Elland Steel Structures Ltd has supplied the structural steelwork for a new aircraft maintenance hangar at Exeter International Airport.

The building will be used for maintaining various aircraft for the airline FlyBe.com

The roof structure includes fabricated roof trusses which span 68 metres, are 5 metres in depth and weigh 44 tonnes each, the longest ever produced by the company. The lifting into position of the steel trusses had to be carefully engineered and pre-planned to

ensure their safe erection and to adhere to the fast track on-site programme for this type of structure. Two 100 tonne Grove Cranes were used for the main truss lift with a 35 tonne Kato lifting the bracings to safely tie the trusses together.

Above: The lift of the main 44 tonne trusses in progress.

# 'Building of the Year' Award Winner

## Devonshire Building, University of Newcastle-upon-Tyne

**MAY 2004** Congratulations are in order for the design and construction team of the new Devonshire Building at the University of Newcastle-upon-Tyne. The building has won the RICS Renaissance Award 2004 for 'Sustainability' and 'Building of the Year'.

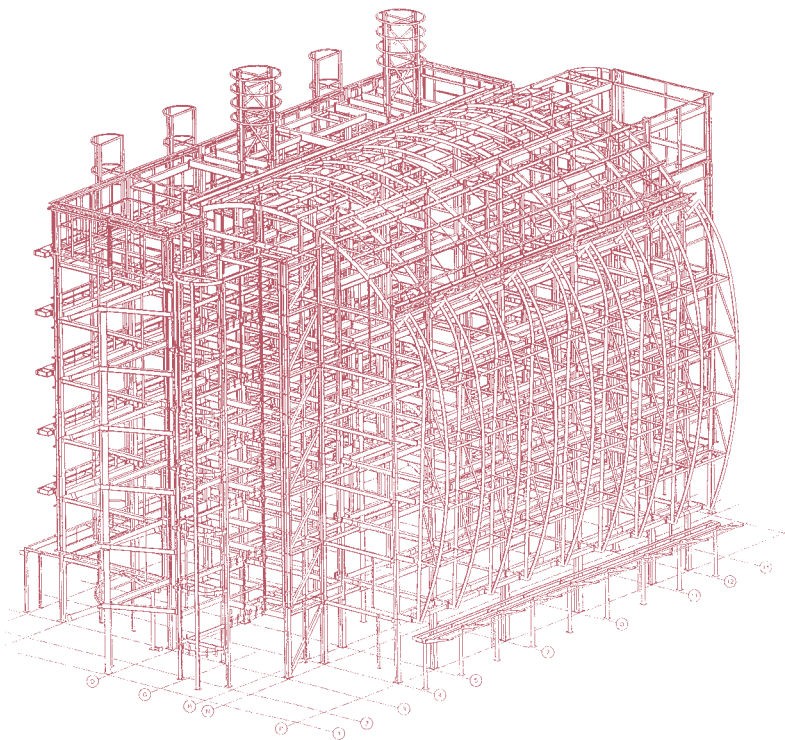
Elland Steel Structures Ltd has secured some £2m of project work from the University in a 5 year business plan aimed at

developing the future requirements of the Institution. Recently, Elland has supplied approximately 1,500 tonnes of structural steelwork,

7,000sqm of metal decking and 4,500sqm of pre-cast units for the latest Paul O'Gorman and Devonshire Buildings.

**Supply chain success**  
Operating within the 'supply chain' ethos Elland was involved at an early stage to maximise the opportunities to

achieve cost effectiveness through value engineering, whilst maintaining a challenging programme working within high levels of safety. The strong relationship with the supply chain partner and design team continues to blossom and future business from the University is likely.



Isometric view of the Devonshire Building



Newsletter produced by Kludo Studios, Leeds. Tel: 0113 250 5959

**CAN WE HELP YOU?** Elland Steel Structures Ltd takes a proactive approach to providing help and assistance using its extensive knowledge and technical expertise in its specialist field.

If Elland Steel Structures can help you with any of the following:

- Project Costing
- Value Engineering Exercises
- Planning/Programming
- Best Practice
- General Expertise & Problem Solving

please call Jeremy Shorrocks, Commercial Director on: 01422 380262



please visit our updated website:  
**[www.ellandsteel.com](http://www.ellandsteel.com)**

**Elland Steel Structures Ltd** Philmar House, Highroad Well Works, Gibbet Street, Halifax, W.Yorkshire, HX2 0AR  
Telephone: 01422 380262 Fax: 01422 380263 Email: [sales@ellandsteel.com](mailto:sales@ellandsteel.com)

Focusing On Performance